

## FINISHES GUIDE

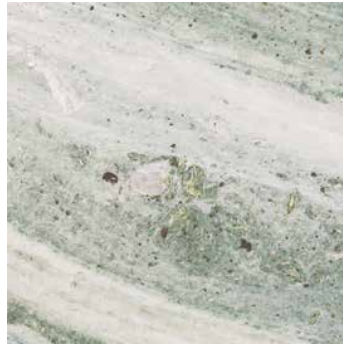
Marta Delgado's thorough vocabulary of finishes is curated with care, contemplating their beauty, and also their tactile and structural features. The materials selected are finished in order to age gracefully and withstand the test of time.

### MARBLE



**ESTREMOZ**  
POLISHED | HONED

Origin: Central Portugal, Évora.



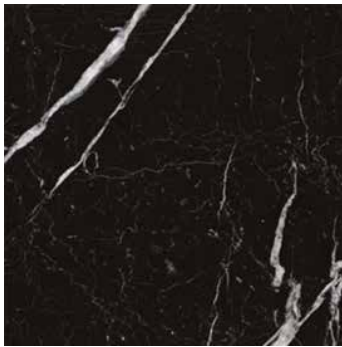
**VERDE SERPA**  
POLISHED | HONED

Origin: Southeast Portugal, Beja.



**CARRARA**  
POLISHED | HONED

Origin: Northwest Italy, Lunigiana.



**NERO MARQUINA**  
POLISHED | HONED

Origin: Northern Spain, Basque Country.

\* Blocks and slabs visibly vary as these are natural stones. All pictures are just a rough guide.

\*\* Any surface blemishes, that are attributable to the naturalness of stones, can be resin-filled and are not to be considered as defects.

## WOOD VENEER



**AMERICAN WALNUT**  
GLOSS | MATT

Origin: North America

Aesthetics: Deep chocolate color, often highlighted by red or purple streaks and/or tint. Straight grains, though sometimes irregular; fine texture and warm luster.



**AMARA EBONY**  
GLOSS | MATT

Origin: Southeast Asia.

Aesthetics: Varies from dark grey to black with regular or irregular reddish stripes. Grain is usually straight, but can sometimes be interlocked; fine uniform texture and a special sheen.



**OAK**  
GLOSS | MATT

Origin: Diverse, Northern Hemisphere.

Aesthetics: Plain and straight grained with a minimal look.

\* Colour and grains visibly vary as these are natural wood veneers and may be different in appearance from log to log, within a log and from leaf to leaf or across a sheet. All pictures are just a rough guide.

## METAL



**BRASS**  
POLISHED

Composition: an alloy of copper and zinc.

Texture and shine may slightly vary as these are handmade. All pictures are just a rough guide.



**BRASS**  
BRUSHED

Composition: an alloy of copper and zinc.

Texture may slightly vary as these are handmade. All pictures are just a rough guide.



**BRASS**  
OLD PATINE

Composition: an alloy of copper and zinc.

Old patine is created by artisans to reveal the layers of beauty in the brushed brass.

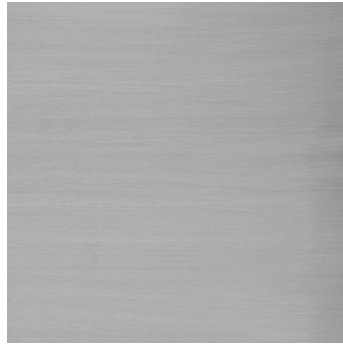
Colour and texture may slightly vary as these are handmade. All pictures are just a rough guide.



**STAINLESS STEEL**  
POLISHED

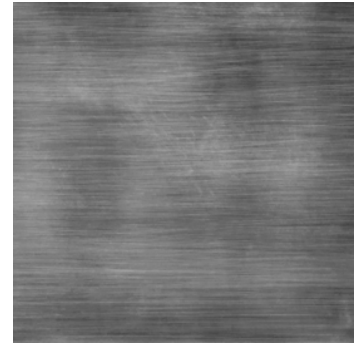
Composition: iron based alloy with chromium.

\* Texture, shine and color may slightly vary as these are handmade. All pictures are just a rough guide.



**STAINLESS STEEL**  
BRUSHED

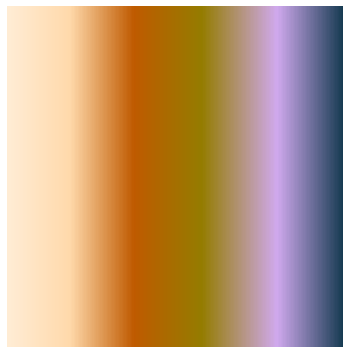
Composition: iron based alloy with chromium.



**STAINLESS STEEL**  
OLD PATINE

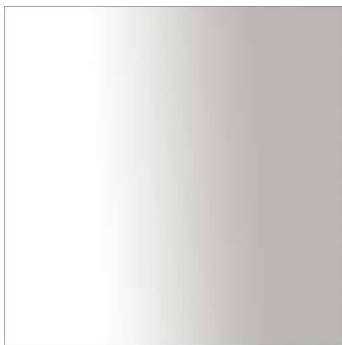
Composition: iron based alloy with chromium. Old patine is created by artisans to reveal the layers of beauty in the brushed stainless steel.

### LACQUER



**ALL COLORS - RAL | NCS**  
GLOSS | MATT

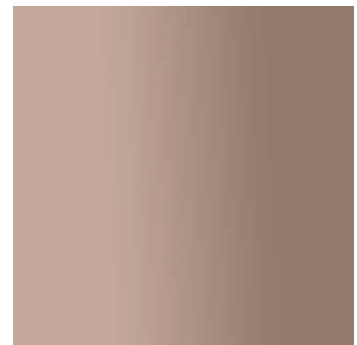
### MIRROR



**CLEAR**



**SMOKEY**



**BRONZE**

## FABRICS



**VELVET  
WHITE**

Composition: 100% PL  
Martindale: 150.000



SAND GREIGE TAUPE MUSTARD RUST

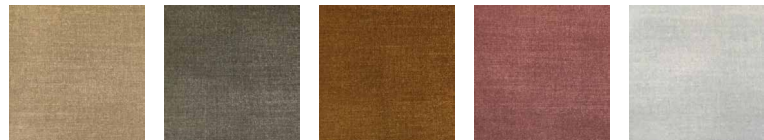


GREY STONE OLIVE MOSS NAVY



**VELVET FR  
SAND**

Composition: 100% PL  
Martindale: 100.000



GREIGE TAUPE RUST BLUSH GREY



STONE DARK GREY MOSS NAVY

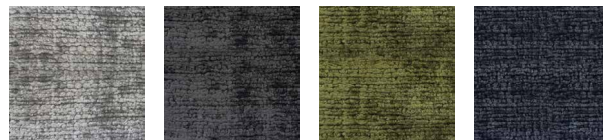


**VINTAGE  
WHITE**

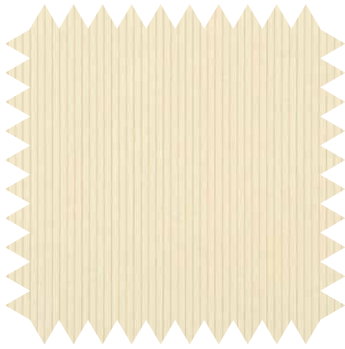
Composition: 66% PC + 34% PL  
Martindale: 25.000



GREIGE SAND TAUPE RUST BLUSH



GREY DARK GREY MOSS NAVY



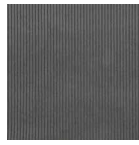
**CORDED VELVETEEN**  
WHITE

---

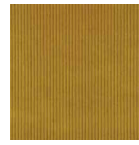
Composition: 100% CO  
Martindale: 20.000



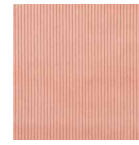
GREY



DARK GREY



MUSTARD



BLUSH



MOSS



ESPRESSO



**BOUCLÉ**  
WHITE

---

Composition: 34% VI + 33% PC +  
+ 17% WO + 8% PL + 4% LI + 4% CO  
Martindale: > 50.000



GREIGE



GREY



**WIDE BOUCLÉ**  
WHITE

---

Composition: 100% PL  
Martindale: > 50.000